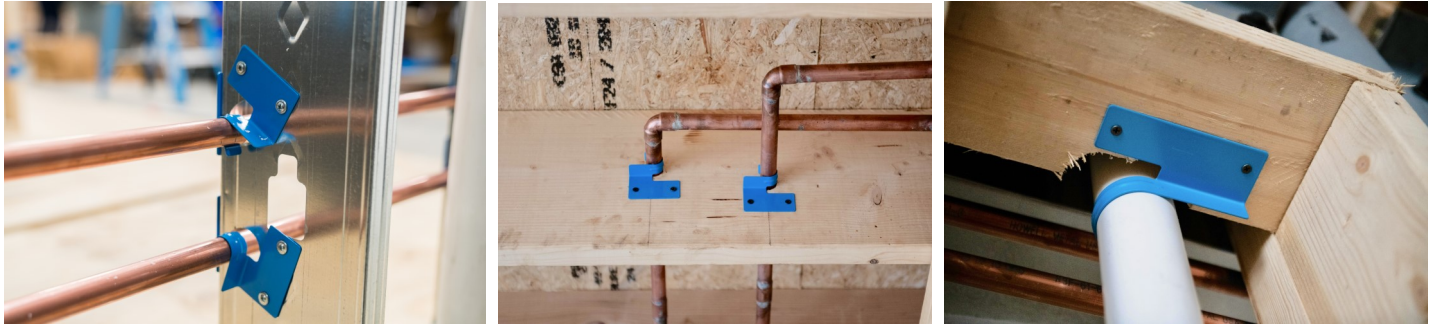




HAP B-HANGER

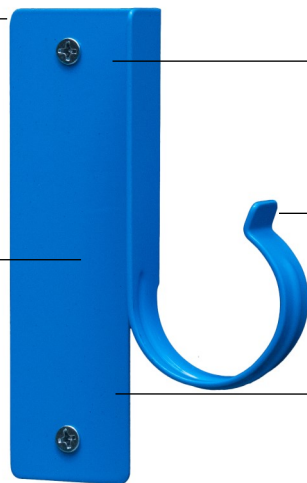
Pipe Hanging Versatility Inside and Outside the Wall



HAP B-HANGER PRODUCT FEATURES

Rounded edges for safe installation.
No sharp surfaces.

Mounting plate provides stability for vertical or horizontal installations.



Fast and easy installation.
Installs with two screws using a cordless drill/driver.

Tempered spring steel allows pipes to easily snap into the bracket during installation.

Durable power coated finish for indoor or outside applications.

The B-Hanger pipe bracket loop is set at 90° to the mounting surface.



SMALL HAP B-HANGERS

PL-1111-B1/2

PL-1111-B3/4

PL-1111-B1



Fits:

1/2" CPVC, PEX and Copper pipe

Fits:

3/4" CPVC, PEX, Copper and 1/2" PVC pipe

Fits:

1" CPVC, PEX, Copper and 3/4" PVC pipe

MEDIUM HAP B-HANGERS

PL-1111-B5

PL-1111-B10

PL-1111-B20



Fits:

1-1/4" PVC and 1-1/2" Copper pipe

Fits:

1-1/2" PVC and 2" Copper pipe

Fits:

2" PVC and 2-1/4" Copper pipe

HAPSYSTEM.COM



HAP B-HANGER

Think “Outside of the Box” with the HAP B-Hanger

HAP B-HANGER PRODUCT APPLICATIONS



Inside or outside of the wall: For applications that need to go through the center or back of the stud



Highly versatile: Secures pipes in a wide variety of locations and positions



For applications that need to go through trusses or the back of joists

HOLD AND PROTECT

HAPSYSTEM.COM