

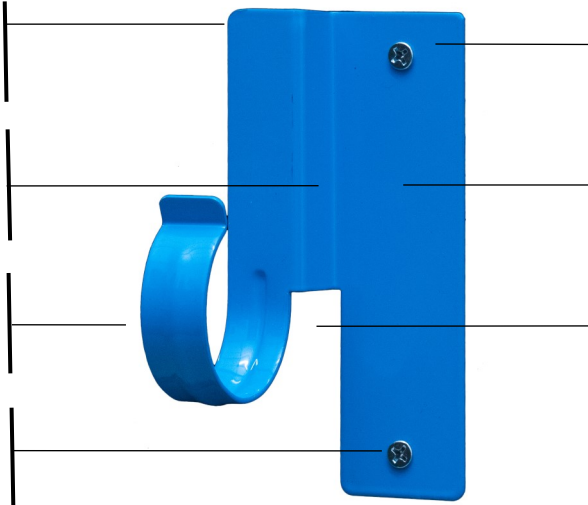
HAP HANGER PRODUCT FEATURES

Rounded edges for safe installation.
No sharp surfaces.

All HAP hangers are concentric.
For jobs that require pipe size reduction, pipes are always on center.

Tempered spring steel allows pipes to easily snap into the bracket during installation.

Fast and easy installation.
Installs with two screws using a cordless drill/driver.



Durable power coated finish for indoor or outside applications.

Combines the pipe hanger and stud guard protection in one product for vertical or horizontal installations.

Provides a gap between the mounting surface and the pipe.



SMALL HAP HANGERS

MEDIUM HAP HANGERS

PL-1111-1/2

PL-1111-3/4

PL-1111-1

PL-1111-7

PL-1111-15

PL-1111-23



Fits:

1/2" CPVC, PEX and Copper pipe

Fits:

3/4" CPVC, PEX, Copper 1/2" PVC pipe

Fits:

1" CPVC, PEX, Copper 3/4" PVC pipe

Fits:

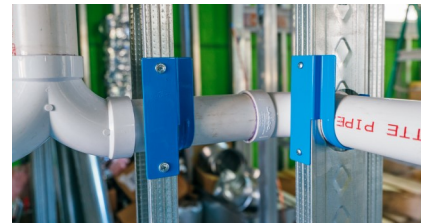
1-1/4" PVC 1-1/2" Copper pipe

Fits:

1-1/2" PVC 2" Copper pipe

Fits:

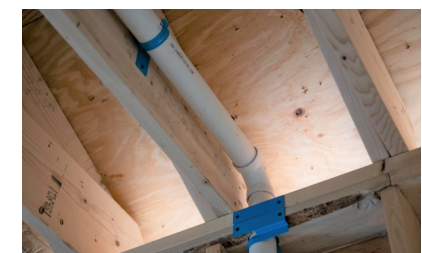
2" PVC 2-1/2" Copper pipe



Inside of the wall: Holds and Protects pipes for both wood or metal studs



Highly versatile: Secures pipes in a wide variety of locations and positions



For installation applications that need to be mounted on beams or joists