

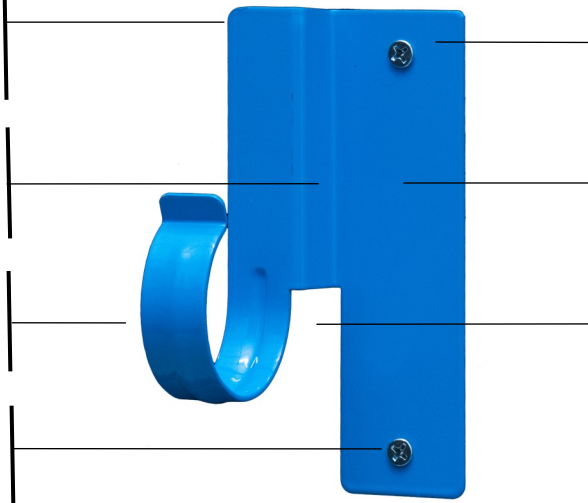
HAP HANGER PRODUCT FEATURES

Rounded edges for safe installation.
No sharp surfaces.

All HAP hangers are concentric.
For jobs that require pipe size reduction, pipes are always on center.

Tempered spring steel allows pipes to easily snap into the bracket during installation.

Fast and easy installation.
Installs with two screws using a cordless drill/driver.



Durable power coated finish for indoor or outside applications.

Combines the pipe hanger and stud guard protection in one product for vertical or horizontal installations.

Provides a gap between the mounting surface and the pipe.



SMALL HAP HANGERS

MEDIUM HAP HANGERS

PL-1111-1/2

PL-1111-3/4

PL-1111-1

PL-1111-7

PL-1111-15

PL-1111-23



Fits:

1/2" CPVC, PEX and Copper pipe

Fits:

3/4" CPVC, PEX, Copper 1/2" PVC pipe

Fits:

1" CPVC, PEX, Copper 3/4" PVC pipe

Fits:

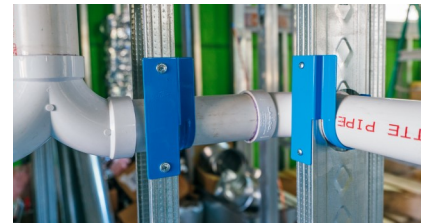
1-1/4" PVC 1-1/2" Copper pipe

Fits:

1-1/2" PVC 2" Copper pipe

Fits:

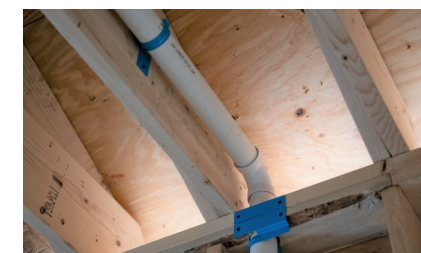
2" PVC 2-1/2" Copper pipe



Inside of the wall: Holds and Protects pipes for both wood or metal studs



Highly versatile: Secures pipes in a wide variety of locations and positions



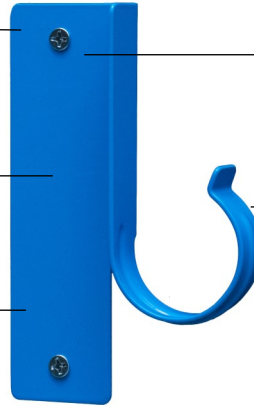
For installation applications that need to be mounted on beams or joists

HAP B-HANGER PRODUCT FEATURES

Rounded edges for safe installation.
No sharp surfaces.

Mounting plate provides stability for vertical or horizontal installations.

Durable power coated finish for indoor or outside applications.



Fast and easy installation.
Installs with two screws using a cordless drill/driver.

Tempered spring steel allows pipes to easily snap into the bracket during installation.



The B-Hanger pipe bracket loop is set at 90° to the mounting surface.

SMALL HAP B-HANGERS

MEDIUM HAP B-HANGERS

PL-1111-B1/2

PL-1111-B3/4

PL-1111-B1

PL-1111-B5

PL-1111-B10

PL-1111-B20



Fits:

1/2" CPVC, PEX
and Copper pipe

Fits:

3/4" CPVC, PEX, Copper
1/2" PVC pipe

Fits:

1" CPVC, PEX, Copper
3/4" PVC pipe

Fits:

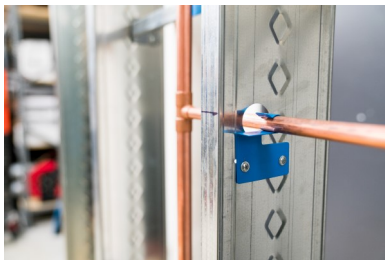
1-1/4" PVC
1-1/2" Copper pipe

Fits:

1-1/2" PVC
2" Copper pipe

Fits:

2" PVC
2-1/2" Copper pipe



Inside of the wall: For applications that need to go through the center or back of the stud



Highly versatile: Secures pipes in a wide variety of locations and positions



For applications that need to go through trusses or the back of joists

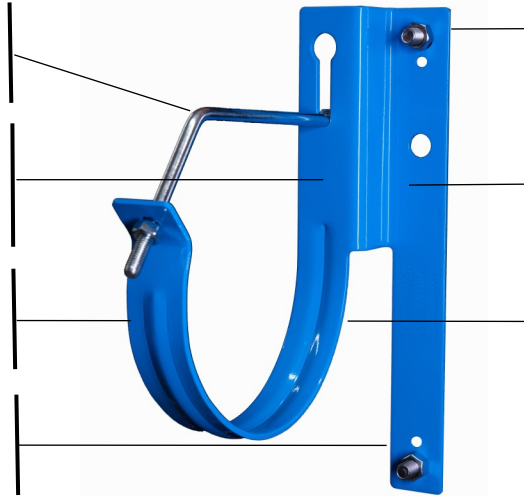
LARGE HAP HANGER PRODUCT FEATURES

Lockable Rod Assembly for added security and load capacity. (Available with V-Hangers Only*)

Large HAP hangers are concentric so that pipes are always on center.

10G low carbon steel provides strength for holding large heavy pipes.

Fast and easy installation using two screws or concrete fasteners using a cordless impact driver.



Rounded edges for safe installation. Durable power coated finish for indoor or outside applications.

Mounting plate provides stability for vertical or horizontal installations.

Provides a gap between the mounting surface and the pipe.



LARGE HANGERS

PL-1111-30



Fits:

3" PVC, SDR, Copper, Stainless and CI Pipe

PL-1111-40



Fits:

4" PVC, SDR, Copper, Stainless and CI Pipe

PL-1111-60



Fits:

6" PVC, SDR, Copper, Stainless and CI Pipe

LARGE LOCKABLE V-HANGERS*

PL-1111-V30



Fits:

3" PVC, SDR, Copper, Stainless and CI Pipe

PL-1111-V40



Fits:

4" PVC, SDR, Copper, Stainless and CI Pipe

PL-1111-V60

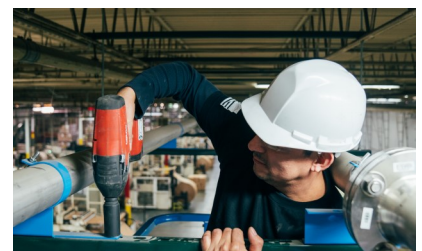


Fits:

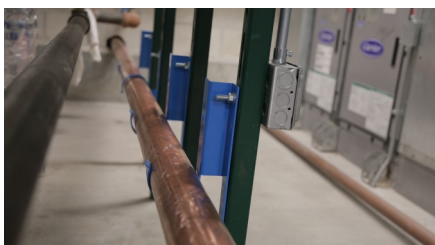
6" PVC, SDR, Copper, Stainless and CI Pipe



Large HAP Hangers make large pipe installation easy for both Inside and Outside of the wall applications



Large HAP Lockable V-Hangers provide added security and load capacity for demanding applications



Install large pipes with confidence both indoors or outdoors: HAP Hangers are Fast, Secure and Durable

HAP STUD GUARD PRODUCT FEATURES

16 gauge proprietary spring steel provides the ultimate protection against nail and screw penetration. Withstands impact from a nail gun using up to 100 PSI of pressure.

Fast and easy installation using two screws using a cordless impact driver.



Rounded edges for safe installation. No sharp edges.

Durable power coated finish is suitable for indoor or outside applications.



SMALL STUD GUARD

PL-1111-SNP1



1-1/2" x 3" Use with Small Hap Hangers



MEDIUM STUD GUARD

PL-1111-SNP10



1-1/2" x 5" Use with Medium Hap Hangers



Firing with 100 PSI of pressure, the HAP Stud Guard deflects the nail while a common stud guard fails



HAP Stud Guards used with HAP Pipe Hangers provide the ultimate protection for pipes

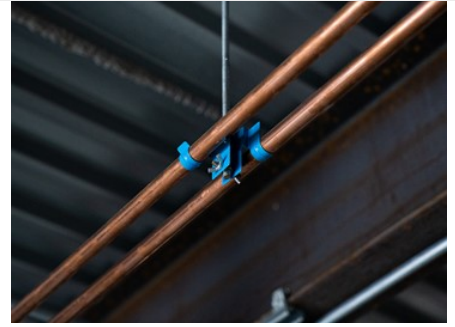
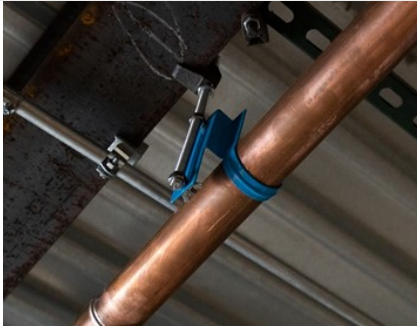


Hold and Protect pipes with confidence: HAP Stud Guards and Pipe Hangers are Fast, Secure and Durable



HAP BULLET

Innovation in Suspending Pipes Overhead



HAP Bullets
thread onto
3/8" Threaded Rod



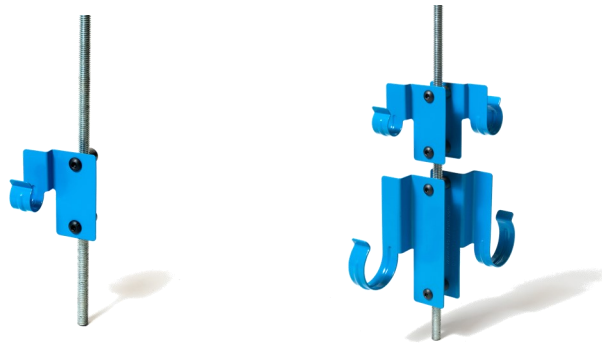
HAP Hangers are
secured using
attachment screws



HAP Bullet / Hanger assembly quickly spins up or down to desired height, then simply snap pipe onto the hanger.

Model PL-1111-BTR1

Engineered for speed and versatility



Use on 3/8" Threaded Rod with any HAP pipe hanger up to 2"

www.hapsystem.com

HAP MOUNTING BRACE PRODUCT FEATURES

Locator dimples on face of the bar allows for exact positioning of a single or multiple HAP Hangers.

The dimple allows screws to start quickly and prevents screws from stripping out when attaching the HAP Hangers.

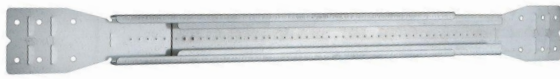


The mounting legs are bendable and can be used on metal or wood studs.

The brace length is adjustable to fit your specific mounting needs

SMALL MOUNTING BRACE

PL-1111-MB1



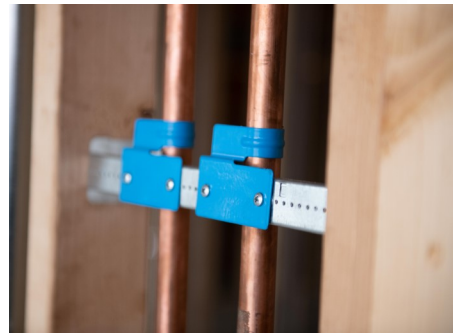
Adjusts from 10-3/8" to 18"

LARGE MOUNTING BRACE

PL-1111-MB10



Adjusts from 15" to 26"



Vertical pipe installation in-between studs



Overhead pipe installation in-between joists and beams



Using HAP Mounting Braces with HAP Hangers brings speed and versatility to pipe installation