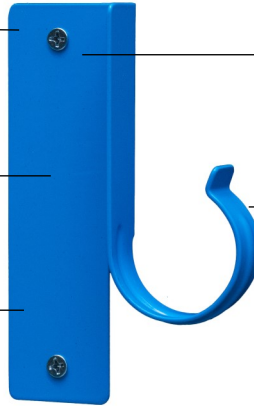


HAP B-HANGER PRODUCT FEATURES

Rounded edges for safe installation.
No sharp surfaces.

Mounting plate provides stability for vertical or horizontal installations.

Durable power coated finish for indoor or outside applications.



Fast and easy installation.
Installs with two screws using a cordless drill/driver.

Tempered spring steel allows pipes to easily snap into the bracket during installation.



The B-Hanger pipe bracket loop is set at 90° to the mounting surface.

SMALL HAP B-HANGERS

MEDIUM HAP B-HANGERS

PL-1111-B1/2

PL-1111-B3/4

PL-1111-B1

PL-1111-B5

PL-1111-B10

PL-1111-B20



Fits:

1/2" CPVC, PEX
and Copper pipe

Fits:

3/4" CPVC, PEX, Copper
1/2" PVC pipe

Fits:

1" CPVC, PEX, Copper
3/4" PVC pipe

Fits:

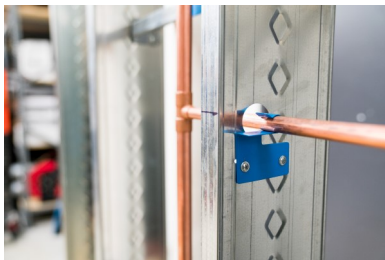
1-1/4" PVC
1-1/2" Copper pipe

Fits:

1-1/2" PVC
2" Copper pipe

Fits:

2" PVC
2-1/2" Copper pipe



Inside of the wall: For applications that need to go through the center or back of the stud



Highly versatile: Secures pipes in a wide variety of locations and positions



For applications that need to go through trusses or the back of joists