



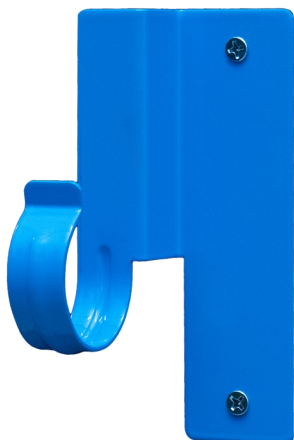
# 2024 HAP SYSTEM DEMO WALL PROMO

Free HAP Display Wall with a Qualifying Order

Increase your sales with Rough Plumbing Inspiration and HAP System!

## The HAP Demo Display Wall...

- Shows the versatility of HAP System products in typical plumbing applications.
- Includes wood and metal studs.
- Copper and PVC pipe applications.
- In-between stud pipe securement.
- HAP Hanger's concentricity for pipe size reduction applications.
- Overhead pipe securement.
- Icemaker application.
- Shower application.
- Laundry application.
- Bath and Shower with temperature control application.
- Bathroom sink application.
- Product display and selection guide.



**HAP System will custom build the wall to fit your space**

HAP System will work with you to design the demo wall to fit within your available space.

- From an endcap display to an 8' wall, we will provide a display that will meet your needs.
- Applications shown will depend on space available





# 2024 HAP SYSTEM DEMO WALL PROMO

## Free HAP Display Wall with a Qualifying Order

### Qualifying order Details

- Order shall include all models purchased with qualifying order quantities
- Promotional Payment terms are net 60 Days
- Freight Terms: FFA

| Category       | Model #       | Description                          | Qualifying Order Quantities |
|----------------|---------------|--------------------------------------|-----------------------------|
| Small Hangers  | PL-1111-1/2   | 1/2 in. HAP Hanger                   | 200                         |
|                | PL-1111-3/4   | 3/4 in. HAP Hanger                   | 200                         |
|                | PL-1111-1     | 1 in. HAP Hanger                     | 200                         |
|                | PL-1111-B1/2  | 1/2 in. HAP B-Hanger                 | 200                         |
|                | PL-1111-B3/4  | 3/4 in. HAP B-Hanger                 | 200                         |
|                | PL-1111-B1    | 1 in. HAP B-Hanger                   | 200                         |
| Medium Hangers | PL-1111-7     | 1-1/4 in. HAP Hanger                 | 100                         |
|                | PL-1111-15    | 1-1/2 in. HAP Hanger                 | 100                         |
|                | PL-1111-23    | 2 in. HAP Hanger                     | 100                         |
|                | PL-1111-B5    | 1-1/4 in. HAP B-Hanger               | 100                         |
|                | PL-1111-B10   | 1-1/2 in. HAP B-Hanger               | 100                         |
|                | PL-1111-B20   | 2 in. HAP B-Hanger                   | 100                         |
| Large Hangers  | PL-1111-30    | 3 in. HAP Hanger                     | 10                          |
|                | PL-1111-40    | 4 in. HAP Hanger                     | 10                          |
|                | PL-1111-60    | 6 in. HAP Hanger                     | 10                          |
|                | PL-1111-V30   | 3 in. HAP Hanger with Locking System | 10                          |
|                | PL-1111-V40   | 4 in. HAP Hanger with Locking System | 10                          |
|                | PL-1111-V60   | 6 in. HAP Hanger with Locking System | 10                          |
| Stud Guards    | PL-1111-SNP1  | 1-1/2 in x 3 in HAP Stud Guard       | 400                         |
|                | PL-1111-SNP10 | 1-1/2 in x 5 in HAP Stud Guard       | 200                         |
| Other          | PL-1111-BTR1  | HAP Bullet 10-Pack                   | 25                          |
|                | PL-1111-MB1   | Small Stud Mounting Brace            | 50                          |
|                | PL-1111-MB10  | Large Stud Mounting Brace            | 50                          |
|                | PL-1111-CC1   | HAP Carrier Clip                     | 28                          |

Upon acceptance of your qualifying order, we will work with you on designing your Free HAP Display. Once completed, the display will be shipped and set up at your location.

